

<https://doi.org/10.7250/CONNECT.2026.066>

# MULTI-CRITERIA ANALYSIS FOR ASSESSING CARBON SEQUESTRATION PRACTICES IN AGRICULTURE UNDER THE EU CERTIFICATION SCHEME

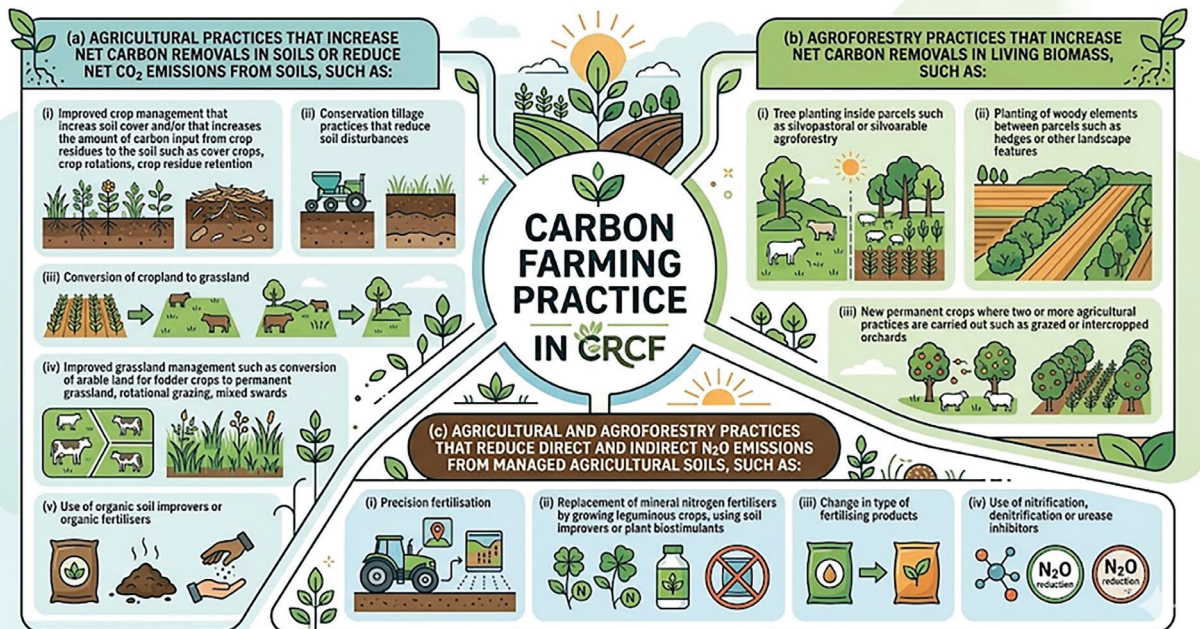
Ilze LUKSTA<sup>1\*</sup>, Krista LAKTUKA<sup>2</sup>, Dagnija BLUMBERGA<sup>3</sup>

<sup>1-3</sup> Institute of Energy Systems and Environment, Riga Technical University, Azenes iela 12/1, Riga, LV-1048, Latvia

\* Corresponding author. Email address: [Ilze.Luksta@rtu.lv](mailto:Ilze.Luksta@rtu.lv)

**Abstract** – The study focuses on the practical application of the European Union Carbon Certification Framework (CRCF) in agriculture. The aim of the work is to develop a framework that helps farmers and policymakers evaluate different carbon-related farming practices, such as agroforestry and soil improvement. The study uses multi-criteria analysis to evaluate practices not only according to their climate impact, but also according to their economic viability, implementation complexity and environmental co-benefits. The results offer a structured decision-making tool that facilitates the implementation of CRCF requirements on real farms, helping to identify the most suitable solutions for sustainable agriculture.

**Keywords** – Carbon farming; CRCF; European Union; TOPSIS.



Carbon farming practices

## ACKNOWLEDGEMENT

This work has been supported by the Latvia's state budget Fundamental and Applied Research Project "A Policy Planning Roadmap for Carbon Farming Certification Schemes" No. lzp-2024/1-0417.